



15-17 CUMBERLAND PLACE
SOUTHAMPTON
SO15 2WY



CUMBERLAND **HOUSE**
6,427 – 20,180 SQ FT
FULLY REFURBISHED CITY CENTRE OFFICES TO LET
www.cumberland-house.com

CUMBERLAND HOUSE

Cumberland House is situated in Southampton's premier business location overlooking Isaac Watts Park and the Civic Offices, close to the central railway station and amenities in London Road, Bedford Place and Above Bar.

Cumberland Place is part of Southampton's main inner ring road. There are major office occupiers in the vicinity such as Thomas Eggar Solicitors, Paris Smith and Deloitte.

There are several public car parks in the vicinity including the 539 space Grosvenor Square multi storey immediately to the rear.



DESCRIPTION

Cumberland House is a prominent office building at the junction of Cumberland Place and Grosvenor Square.

The ground and first floors are let to Hampshire Primary Care Trust. The second, third, fourth and fifth floors are undergoing extensive refurbishment, to be completed June 2009.

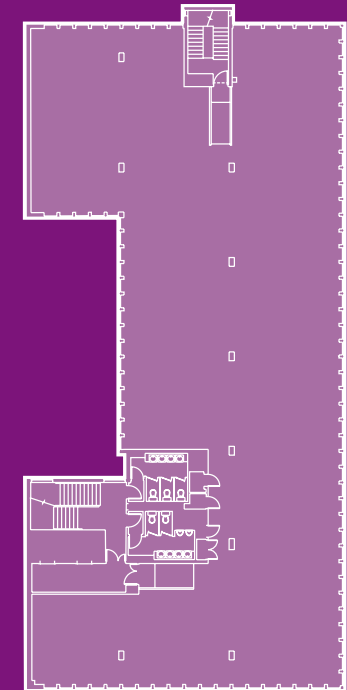
The refurbishment will include a completely refitted prestige ground floor reception, lifts to the upper floors refitted amenities and refurbished office space. There will be secure allocated car parking immediately to the rear.

ACCOMMODATION

Floor	Sq Ft	Sq m
2nd	6,434	597.71
3rd	6,427	597.07
4th	5,760	535.10
5th	1,559	144.83
Total	20,180	1,874.71

All floor areas referred to are net internal approximate.

TYPICAL FLOOR PLAN 2nd Floor





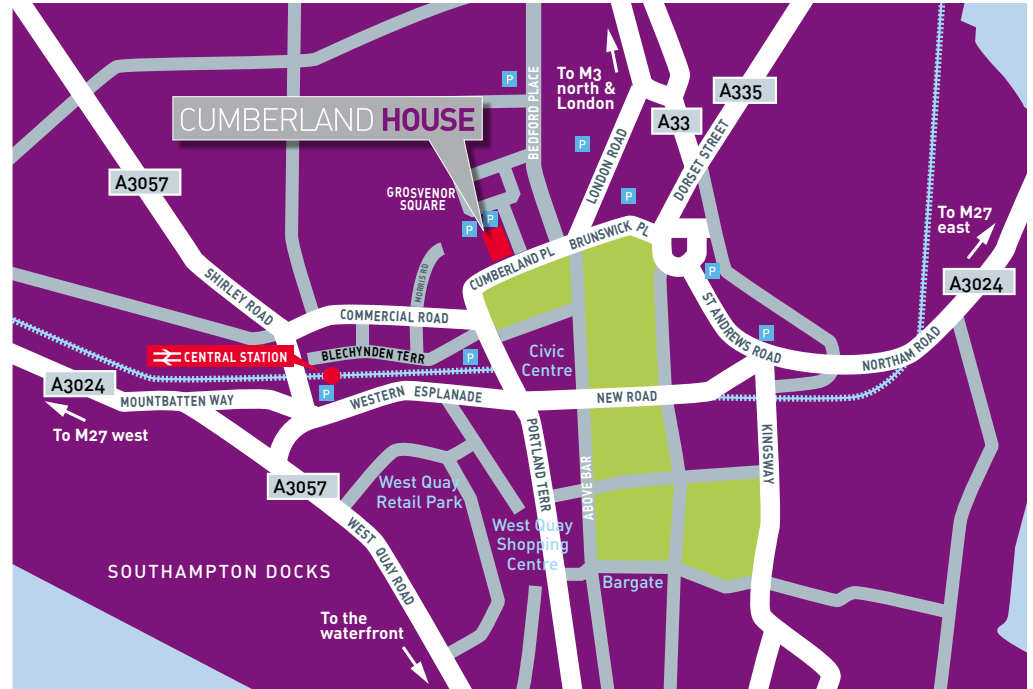
FEATURES

- Air-conditioning
- Raised floors
- Suspended ceilings with inset low glare lighting
- Refurbished reception
- Two passenger lifts
- Refitted male and female toilets on each floor (except 5th floor)
- New double glazed windows with low e glass
- Secure parking
- Door entry security system

TIMING

The offices will be available for occupation from June 2009.





CUMBERLAND HOUSE

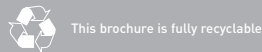
6,427 – 20,180 SQ FT
FULLY REFURBISHED CITY CENTRE OFFICES TO LET

www.cumberland-house.com

Atisreal
A BNP PARIBAS company

023 8038 5000
www.atisreal.co.uk

Atisreal, their clients and any joint agents give notice that: They are not authorised to make or give any representations or warranties in relation to the property either here or elsewhere, either on their own behalf or on behalf of their client or otherwise. They assume no responsibility for any statement that may be made in these particulars. These particulars do not form part of any offer or contract and must not be relied upon as statements or representations of fact. Any areas, measurements or distances are approximate. The text, photographs and plans are for guidance only and are not necessarily comprehensive. It should not be assumed that the property has all necessary planning, building regulation or other consents and Atisreal have not tested any services, equipment or facilities. Purchasers must satisfy themselves by inspection or otherwise. January 2009



COMMUNICATIONS

Road	
Southampton Airport	6 miles
Heathrow	68 miles
Central London	79 miles
Winchester	14 miles
Rail	
London Waterloo	70 mins approx

Air
Southampton International Airport provides services to a number of cities in the UK, Dublin and mainland European destinations.

Sea
Continental ferry services are available from Poole (36 miles) and Portsmouth (20 miles).

